


PORK

M&I

NBNS



A close-up photograph of several skewers of grilled pork, likely kebab, sizzling on a grill. The meat is browned and glistening with oil, with some charred edges. The background is dark and out of focus, showing the glowing coals of the grill.

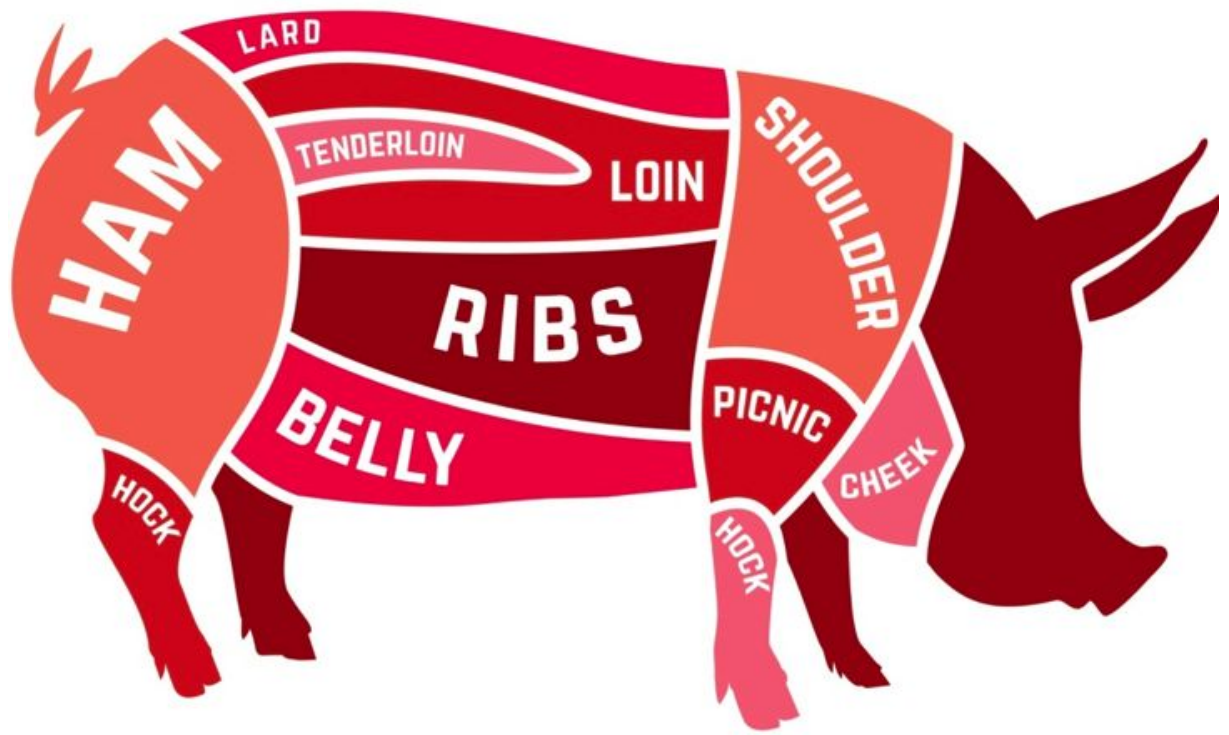
We provide a wide range of pork products that meet & exceed the most stringent **standards and regulations** from around the world

Any amount —

CIF prices —

Worldwide shipping —

CUTS & SPECIFI CATION





Photos taken directly from supplier's facilities with their authorisation



COLLAR BONELESS

無骨豬頸肉

WEIGHT OF CUT
单件重量 2,2 kg

GROSS WEIGHT
PER PACKING BOX
装运箱的毛重 24,8-27,2 kg

NET WEIGHT PER
PACKING BOX
装运箱的净重 24,0-26,4 kg



SHOULDER BONELESS

無骨豬肩膀肉

WEIGHT OF CUT
单件重量 5,1 kg

GROSS WEIGHT
PER PACKING BOX
装运箱的毛重 21,2-22,4 kg

NET WEIGHT PER
PACKING BOX
装运箱的净重 20,4-21,6 kg



LEG BONELESS

無骨豬腿肉

WEIGHT OF CUT
单件重量 9,5 kg

GROSS WEIGHT
PER PACKING BOX
装运箱的毛重 29,3 kg

NET WEIGHT PER
PACKING BOX
装运箱的净重 28,5 kg



PORK TENDERLOIN

豬柳肉

WEIGHT OF CUT
单件重量 0,32 kg

GROSS WEIGHT
PER PACKING BOX
装运箱的毛重 33,2-36,8

NET WEIGHT PER
PACKING BOX
装运箱的净重 32,4-36,0



TRIMMING 80/20

瘦肉 80% / 20%肥肉

WEIGHT OF CUT
单件重量

Frozen in polyblock
20 kg net.

GROSS WEIGHT
PER PACKING BOX
装运箱的毛重

20,8 kg

NET WEIGHT PER
PACKING BOX
装运箱的净重

20,0 kg



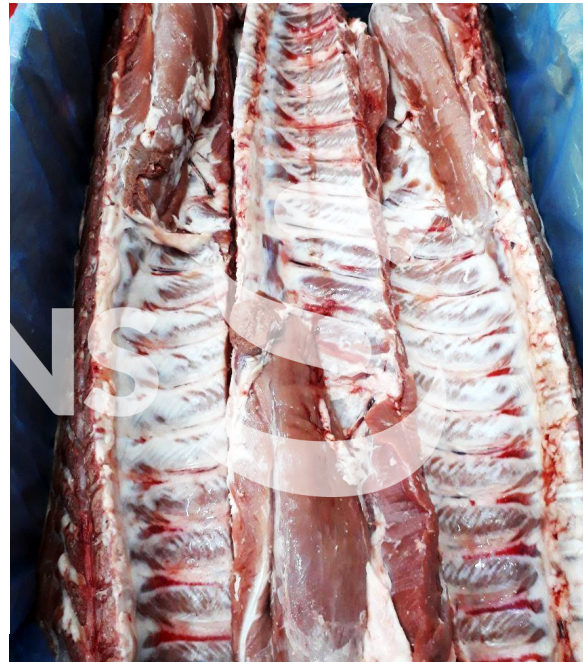
PORK SPARERIB

豬排骨

WEIGHT OF CUT
单件重量 1,6 kg

GROSS WEIGHT
PER PACKING BOX
装运箱的毛重 20,8-22,8 kg

NET WEIGHT PER
PACKING BOX
装运箱的净重 20,0-22,0 kg



PORK LOIN WITH BONE

整條有骨豬柳肉

WEIGHT OF CUT
单件重量

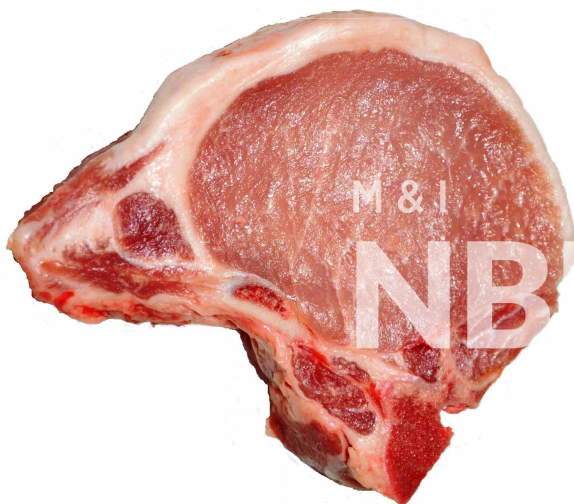
7,46 kg

GROSS WEIGHT
PER PACKING BOX
装运箱的毛重

23,18 – 24,3 kg

NET WEIGHT PER
PACKING BOX
装运箱的净重

22,38 – 23,5 kg



PORK LOIN CHOP STEAK

豬腰肉排

WEIGHT OF CUT
单件重量 0,32 kg

GROSS WEIGHT
PER PACKING BOX
装运箱的毛重 17,6 kg

NET WEIGHT PER
PACKING BOX
装运箱的净重 16,0 kg



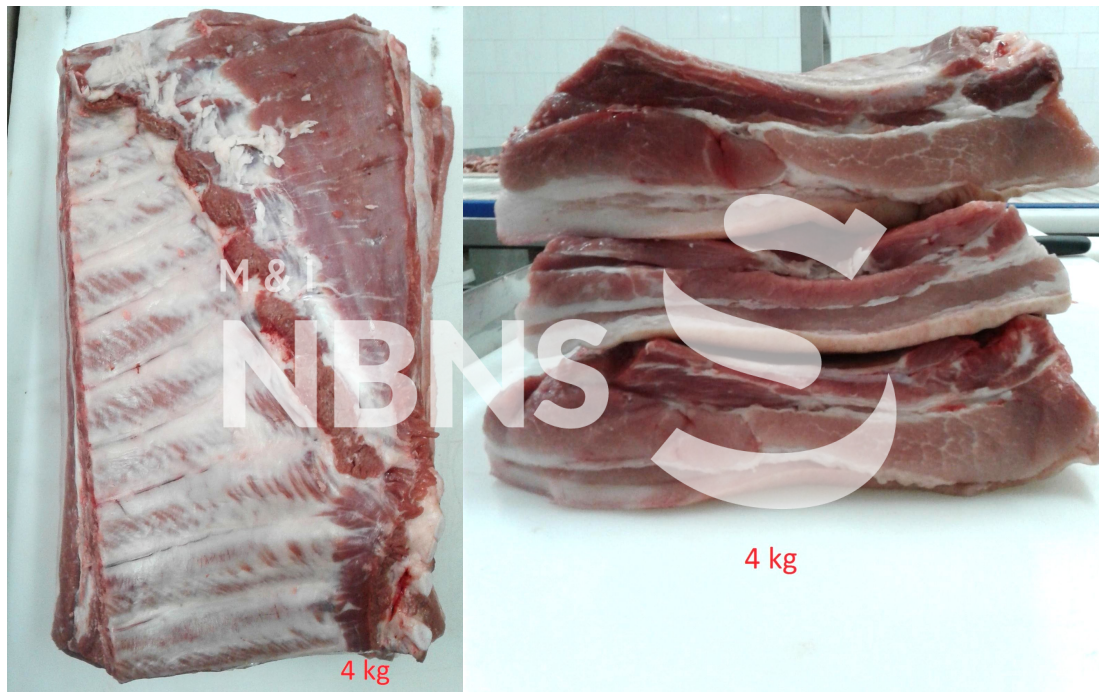
PORK NECK BONE

豬頸骨

WEIGHT OF CUT
单件重量 0,8 kg

GROSS WEIGHT
PER PACKING BOX
装运箱的毛重 15,8 – 16,8 kg

NET WEIGHT PER
PACKING BOX
装运箱的净重 15,0 – 16,0 kg



PORK BELLY

豬肚

WEIGHT OF CUT
单件重量 4,0 kg

GROSS WEIGHT
PER PACKING BOX
装运箱的毛重 20,8 kg

NET WEIGHT PER
PACKING BOX
装运箱的净重 20,0 kg



PIG HEAD

豬頭

WEIGHT OF CUT
单件重量 6,4 kg

GROSS WEIGHT
PER PACKING BOX
装运箱的毛重 20,0 kg

NET WEIGHT PER
PACKING BOX
装运箱的净重 19,2 kg



PIG SIDES (HALF CARCASSES)



WEIGHT OF CUT
单件重量 30-55 kg

GROSS WEIGHT PER
PACKING BOX
装运箱的毛重 -

NET WEIGHT PER
PACKING BOX
装运箱的净重 30-55 kg



NEED... **EXTRA** ...MEAT?

SPECIFIC QUANTITY?

CUSTOM SHIPMENT?

CONTACT US

Or check our catalogs at
<https://nbnsmi.com/commodities-trading/>

CONFIDENCE.

TO OUR CUSTOMERS
IN QUALITY AND DELIVERY

NBN M&I

João Araújo CEO

 [jpfa1961](#)

 joao@nbnsmi.com

 +351 967 610 872

 nbnsmi.com